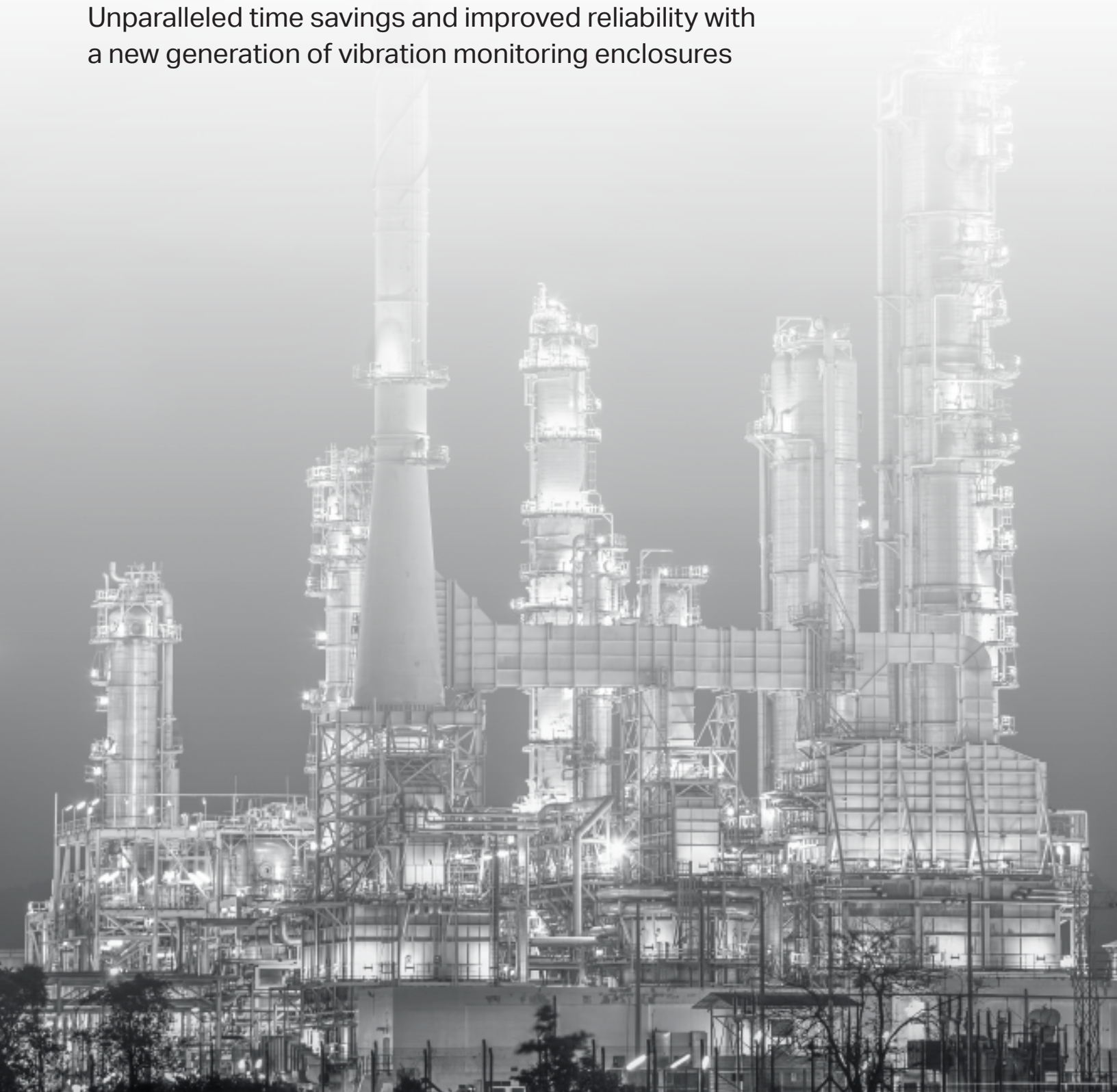


Industrial enclosures

Unparalleled time savings and improved reliability with
a new generation of vibration monitoring enclosures



Enclosures

Designed with the user in mind, enabling quick and safe data acquisition in the harshest industrial environments.

VibraLINK® (VL) series

VLS and VLD enclosures

VLS and VLD switchboxes allow the user to choose between single or dual output and feature an industry-first data ready LED that indicates BOV levels have stabilized. Decrease active collection time, eliminate ski-slope data and increase efficiency.

- Base or expandable enclosure size for up to 48 channels
- Compatible with single- or dual-output IEPE sensors
- Online connectivity for continuous monitoring
- Organized terminals for clean cable runs
- NEMA 4/4X and IP66 ratings
- Customizable cable access holes
- 55% more interior space
- Increased noise immunity
- Lifetime warranty

READY

WAIT

ERROR

FEATURING
Industry-first data ready light for more reliable and efficient data collection.

VLS / VLD configuration options		
X	S: single output	D: dual output
# of channels	6, 8, 12	12, 24, 36, 48
Y (inches)	B = 10 x 8 x 6	E = 20 x 16 x 8
a	F: fiberglass S: stainless steel	
b	C: conduit G: cable grip	
cc	N: no online connectivity OC: conduits OG: cable grips OP: removable plugs	
d	S: screw Q: quickconnect	



Base size, 12-channel fiberglass VLS enclosure



Expandable, 24-channel stainless steel VLS enclosure

HOW TO ORDER

VL X # Y a - b - cc - d

- X

☐

Choose single or dual output
- #

☐

Select number of channels
- Y

☐

Choose size
- a

☐

Material
- b

☐

Cable interface
- cc

☐

Online connectivity
- d

☐

Terminal type

Wilcoxon's new VibraLINK Lite (VLL) enclosures are a cost-effective solution where simplicity of design fulfills your requirements. With many of the same configurable features of VLS and VLD models, VLL enclosures can be tailored to a variety of industrial applications. Visit buy.wilcoxon.com to see all VLL model options or for more information.

HOW TO ORDER

Channels	Cable interface	N: no online connectivity
6, 12, 24, 36, 48	C: conduit G: cable grip	S: screw terminals

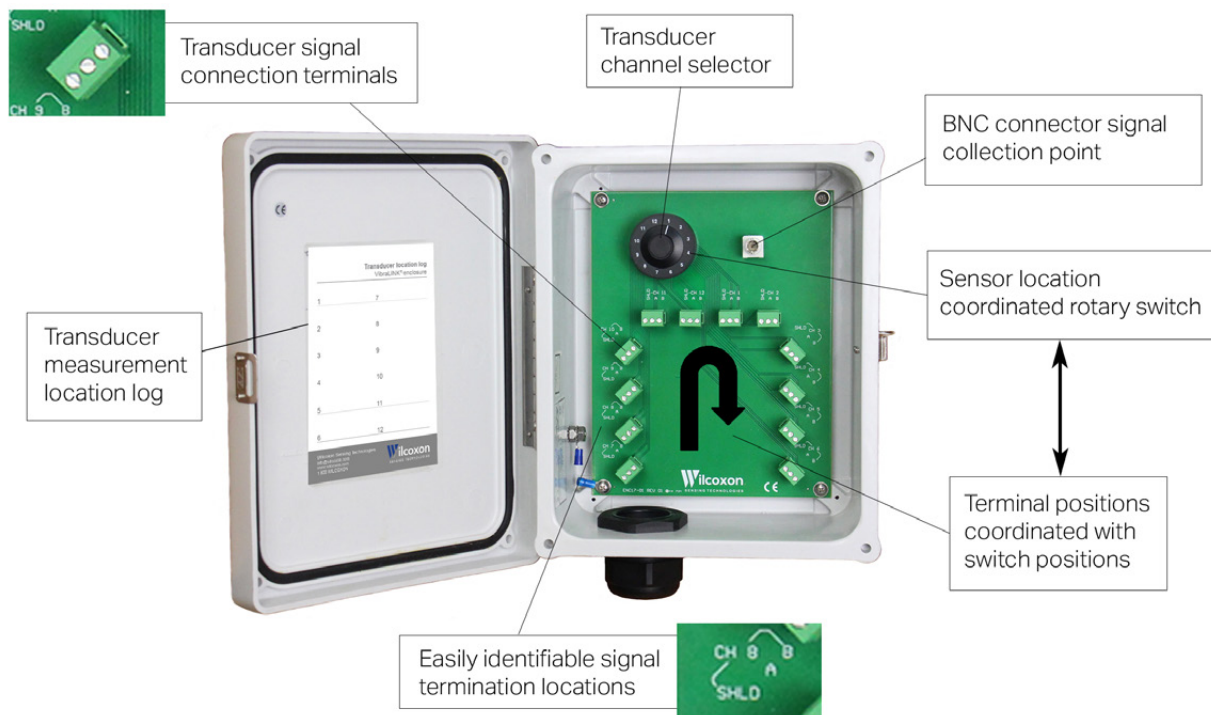
VLL	#	Y	a - b - N - S

Size	Material
B: 10x8x4 E: 20x16x8	F: fiberglass S: stainless steel



Base size, 12-channel fiberglass VLL enclosure

Innovative circuit board design



Need technical assistance? We're here to help.
Visit wilcoxon.com, call us at +1 (301) 330-8811 or email info@wilcoxon.com.

VLT triaxial enclosures

VLT models offer simpler configuration and are designed for use with triaxial sensors.

- 6 channels
- Stainless steel or fiberglass housing
- Cable grips or M12 connectors (for compatibility with data collectors)
- NEMA 4/4X rated for harsh industrial environments



Cable termination boxes

Low-cost, compact CB series enclosures include front panel BNC connectors for easy usage with data collectors. Models available for two- or four-channel applications.

- Rated for indoor applications
- Cap protectors keep out water and dust
- Triaxial sensor-compatible models (CBT)



Reduction boxes

RB series reduction boxes provide a safe and convenient termination for up to 32 channels. Single-channel cables are converted to a multi-conductor output cable routed to remote online monitoring systems.

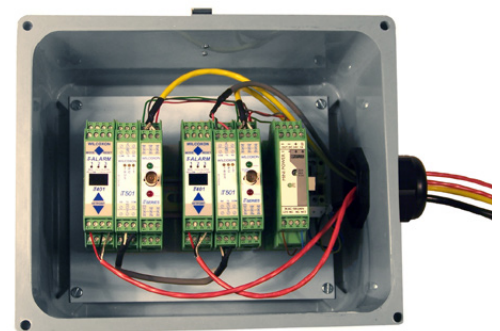
- Safely eliminate costly cable runs
- Organized terminals for easy wiring
- Rated for indoor and outdoor applications



Transmitter enclosures

iT series enclosures include a DIN rail for easy storage of signal conditioning, alarm and power supply modules. Alarm modules can be configured with programmable relay trip levels for around-the-clock monitoring.

- Compatible with iT transmitters and alarm modules
- iT051 houses up to seven modules, iT052 houses up to 25 modules
- Clear front panel model for easy viewing and operation confirmation



Vibration sensors

Over 60 years of industry expertise in developing reliable, high-performance products brings you Wilcoxon's extensive offering of vibration sensors, including:

- Hazardous area certified
- Velocity output
- Low- / high-frequency
- 4-20 mA output
- Low-power, low-voltage
- High isolation
- Triaxial sensors measure vibration along 3 axes
- High-temperature rated
- Radiation resistant for nuclear applications
- Dual-output vibration and temperature
- Integral cable (submersible)



Cable assemblies

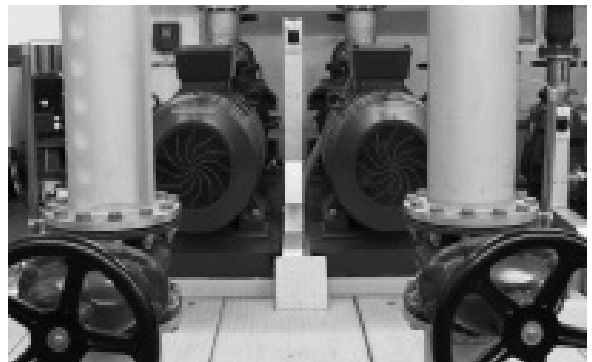
A variety of cable and connector options are offered for permanent or walkaround applications.

Popular cables

- Twisted pair, shielded
- Coaxial
- Low-noise coaxial
- Multi-conductor
- Underwater
- Data collector

Connectors

- Coaxial plug
- BNC
- MIL-5015 style
- M12 style



Accessories

Instrumentation

- Handheld meters
- IR thermometers
- Portable vibration reference source
- Power and signal conditioning
- Electromagnetic shakers
- Transmitters and alarm modules

Mounting hardware

- Magnetic bases
- Isolators
- Fin mounts
- Triaxial cubes
- Adaptor studs
- Adhesives and greases

